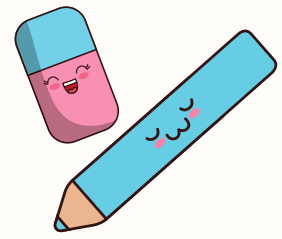


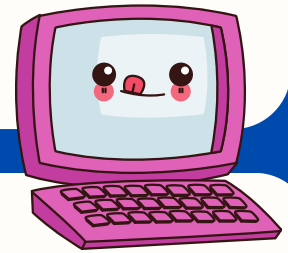
# Pre-K Press



## Start the New Year off right!

Always take time after a break to review and practice classroom rules and expectations! (And expect to provide lots of gentle reminders for the first few days!)

It's hard enough for us to get back into the routine sometimes, and we need to remember that our littlest learners need time to reacclimate to the classroom environment after an extended break.



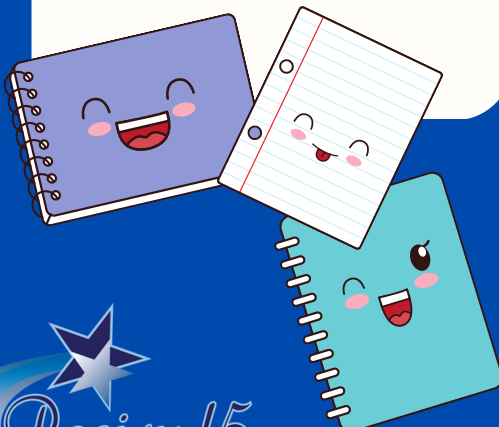
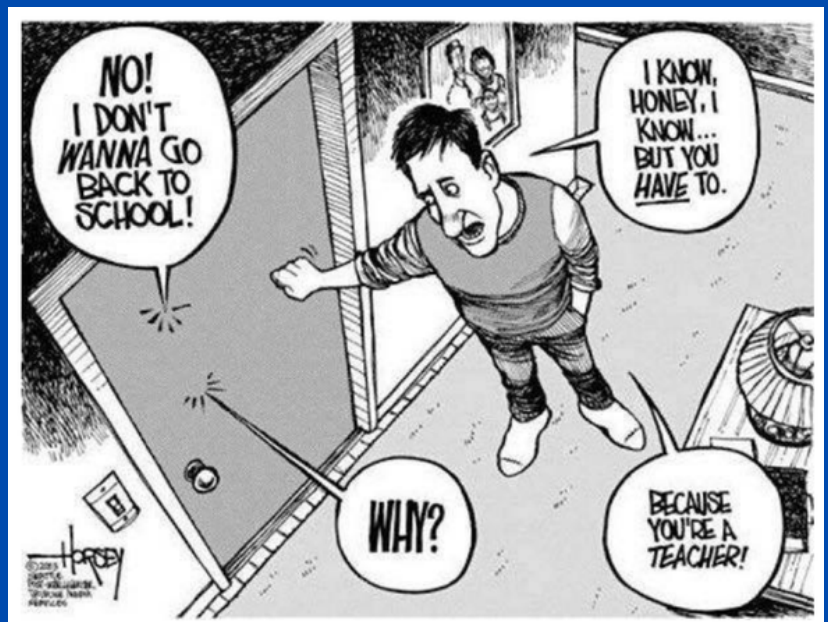
## PD Opportunities

Book Study: "Engage Every Family" by Dr. Steven Constantino  
Session # 201673

Sign Language for Classroom Management  
Session #216000

## Reminders

The CLI Engage Middle-of-Year (MOY) assessment window will be open from mid-January through mid-February. Remember to assess in "chunks." Do NOT make a child go through the entire assessment in one sitting.



# DAP CENTRAL

## DEVELOPMENTALLY APPROPRIATE PRACTICES

### ABCs & Writing

#### Snow Writing

Have children practice writing letters, their names, their friends' names, etc. by using their finger in shaving cream. Squirt it in a pie tin, on a cookie sheet, or right on the table! If they write and play in the "snow" long enough, it will "melt," and your room will smell nice and clean!

### Sensory Table

#### Snow Much Fun!

Use one of the following snow-making ideas and add a winter wonderland to your sensory table! Add some arctic animals, measuring cups and utensils, and other winter-related items for a sensory table that is "snow" much fun to play and learn in.

### Math

#### Snowflake Pattern Blocks

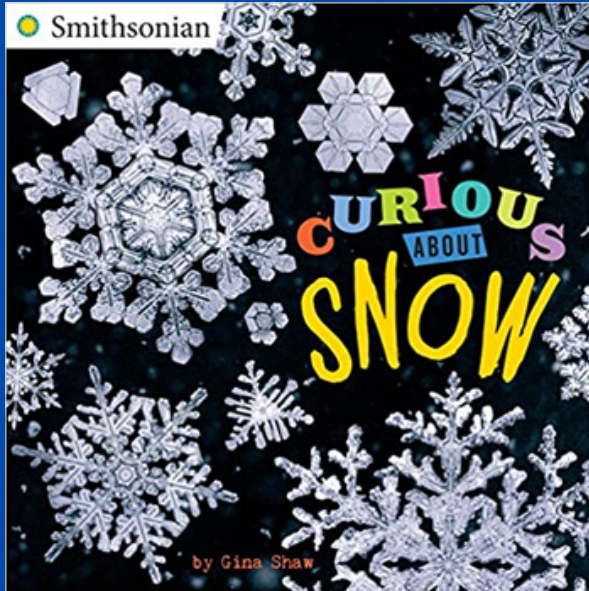
Have children create snowflakes with pattern blocks. If children need support, you can print these pattern block mats. As children grow more confident, encourage them to try to make their own snowflakes. Take photos to document their creations, and hang them up to make it "snow" in your classroom!

### SEL

#### Emotional ABCs

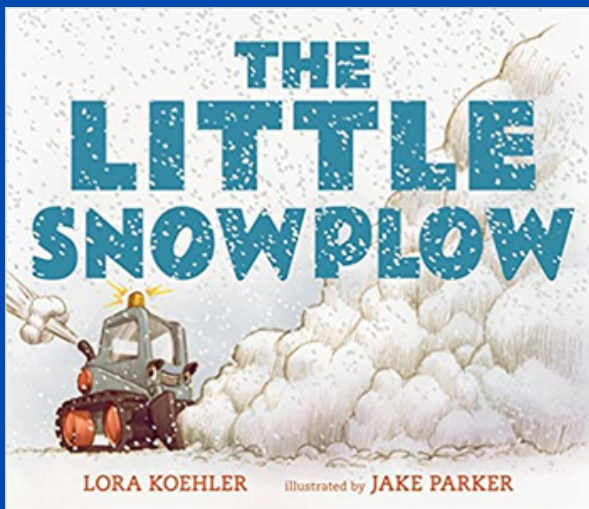
Emotional ABCs is an evidence-based, interactive program that helps children understand and manage their emotions. This program helps children figure out WHAT they are feeling, WHY they are having that emotion, and HOW to make better choices.

# PRE-K BOOK NOOK



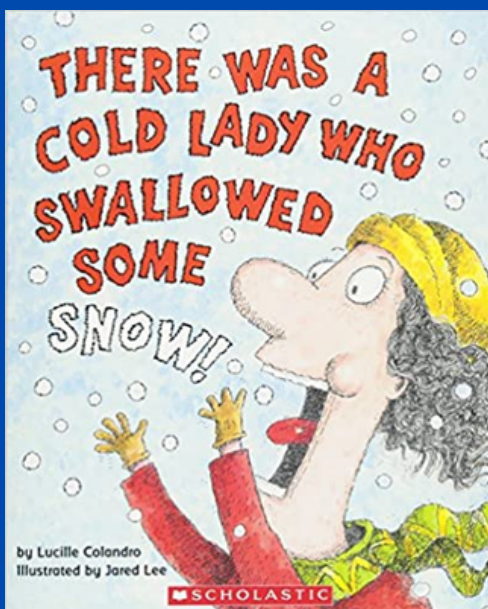
## Curious About Snow

When does it snow? Why is snow white? How do we know no two snowflakes are alike? (Hint: the proof is in the photographs, first made in the 1890s!) With full-color photographs and the Smithsonian's famous Wilson Bentley snowflake photos, this book looks at the science behind snow, the history of record-setting blizzards and snowstorms, and how people have fun in the snow!



## The Little Snowplow

Big trucks may brag and roar, but small and steadfast wins the day in this cheerful story with timeless appeal. Taking its place beside classics such as The Little Engine That Could and Mike Mulligan and His Steam Shovel, this tale of a plucky little plow will find a clear path to readers' hearts.



## There Was a Cold Lady Who Swallowed Some Snow

This time, the old lady is swallowing everything from snow to a pipe, some coal, a hat, and more! With rollicking, rhyming text and funny illustrations, this lively version will appeal to young readers with every turn of the page. And this time, there's a surprise at the end no reader will be able to guess!

# ACADEMY FOR TEACHERS OF YOUNG CHILDREN



SAVE  
THE  
DATE

JULY 13-15, 2022

SAN ANGELO, TX

REGISTRATION  
INFORMATION COMING  
SOON

CONNECT WITH  
ATYC:



ATYC FACEBOOK PAGE



ATYC WEBPAGE